

Now that you understand the component specification (yes we know it is a simple problem) you are ready to create the appropriate Java classes to implement.

COOL:Joe helps you do this with its Implement Specification wizard.



Specification to Implementation Wizard - Welcome



The Specification to Implementation Wizard creates a Java component implementation from a component specification.

The Java component implementation includes classes, methods, attributes, and interfaces.

The wizard allows you to either create a new component implementation or update an existing one.

Click Next to continue.

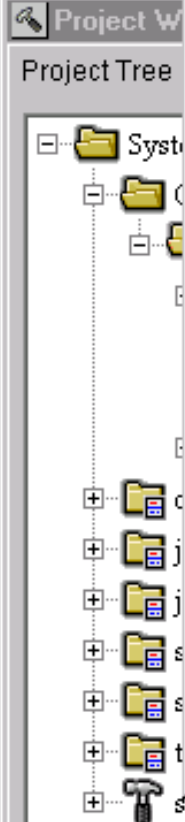
< Back

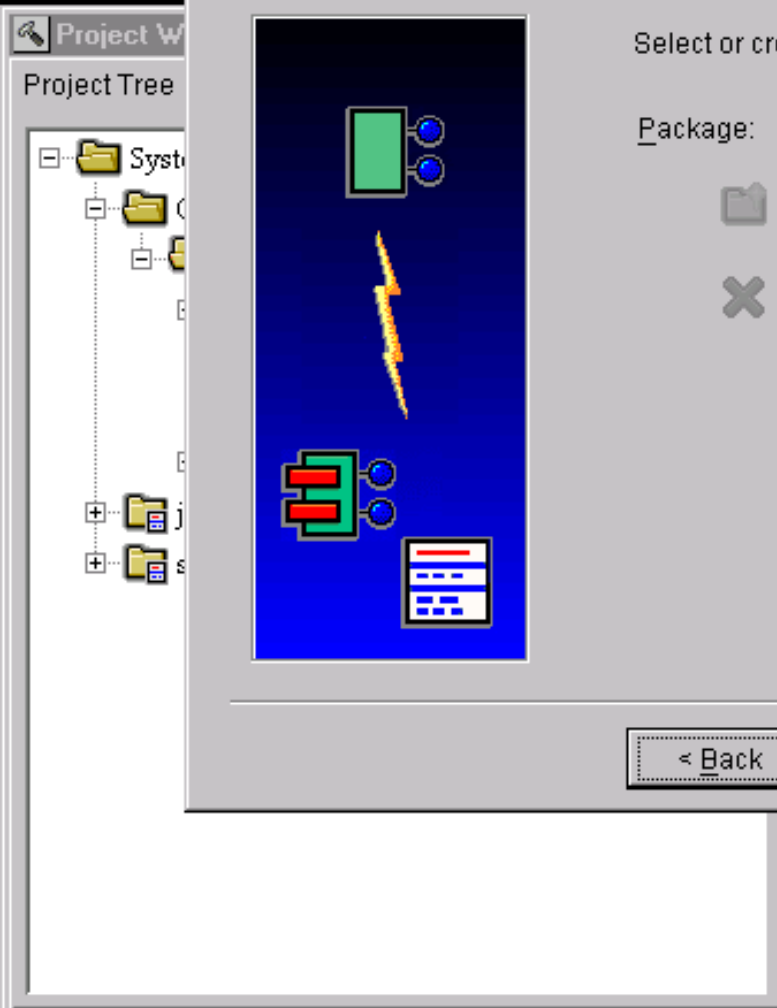
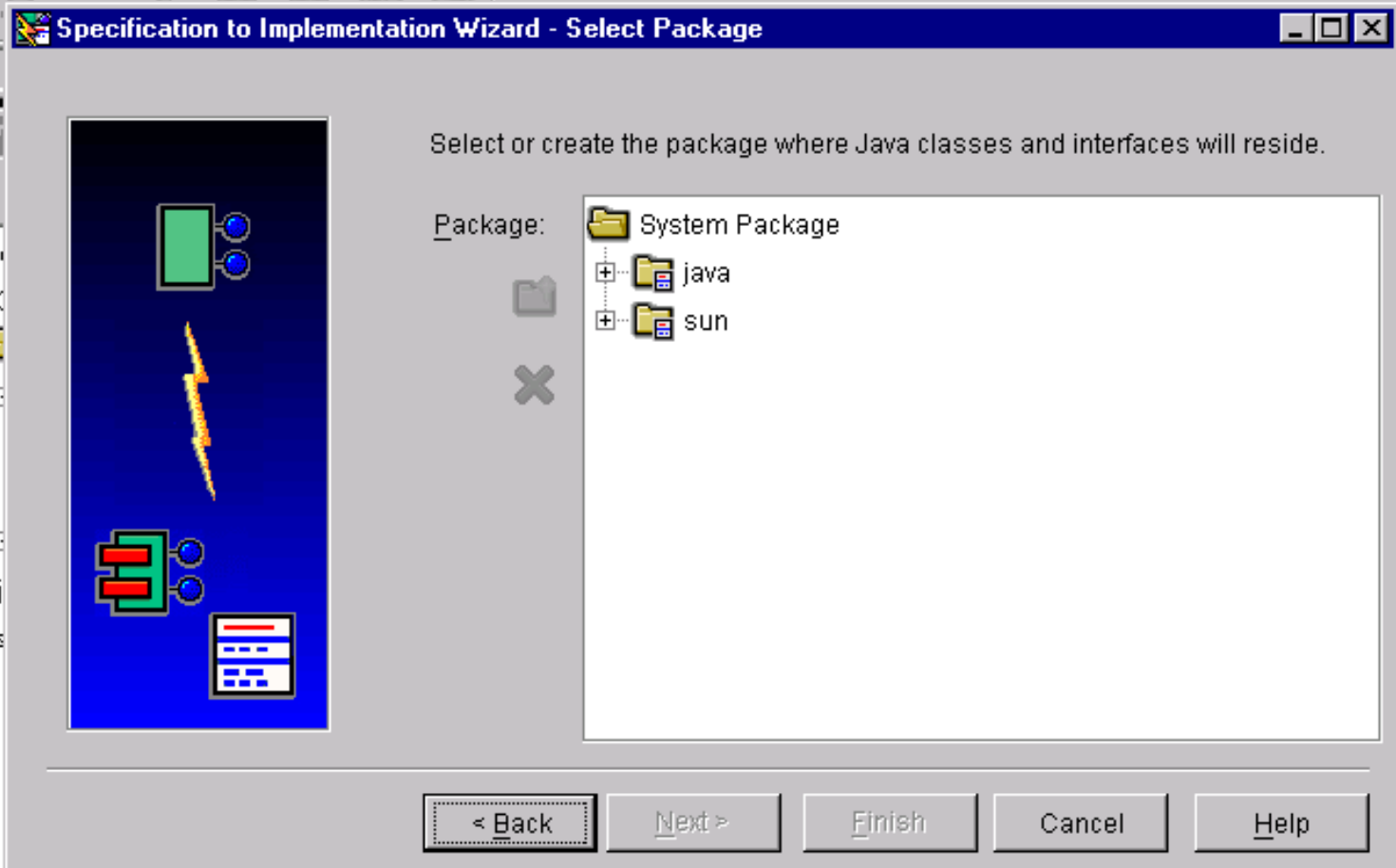
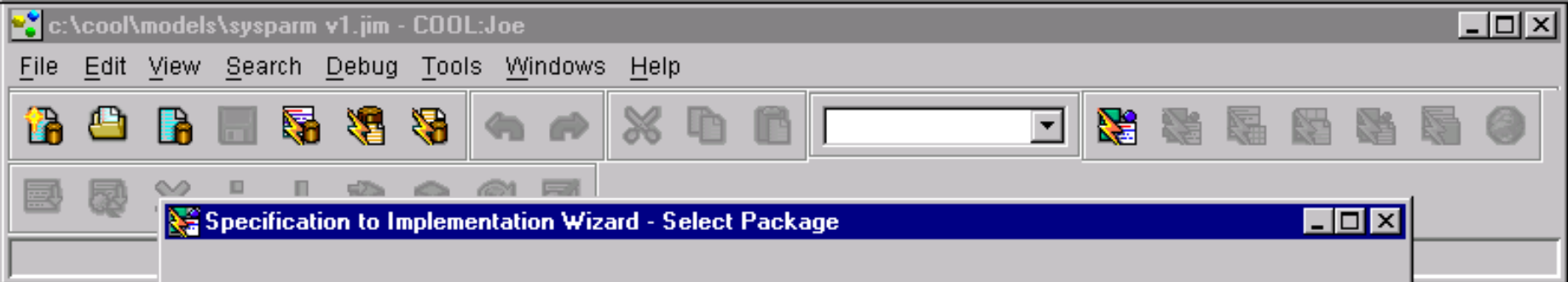
Next >

Finish

Cancel


Help







c:\cool\models\sysparm v1.jim - COOL:Joe

File Edit View Search Debug Tools Windows Help



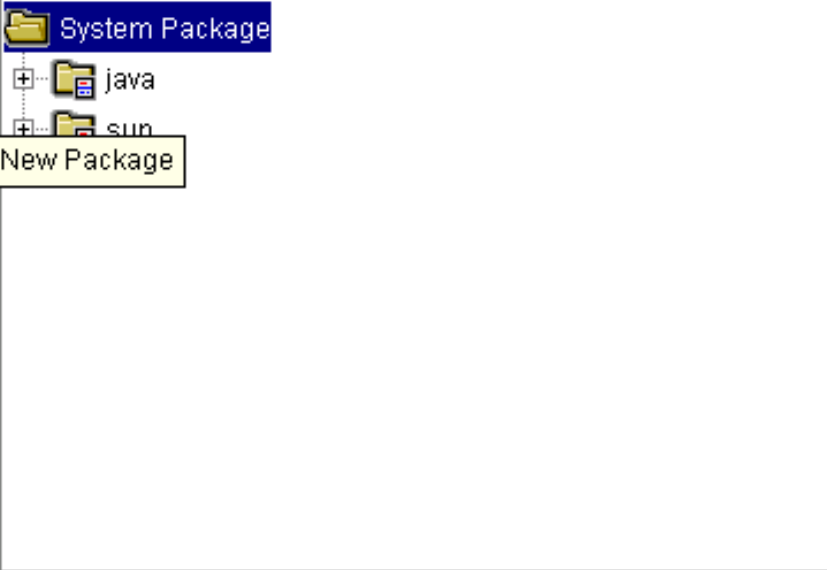
Specification to Implementation Wizard - Select Package

Project Tree



Select or create the package where Java classes and interfaces will reside.

Package:

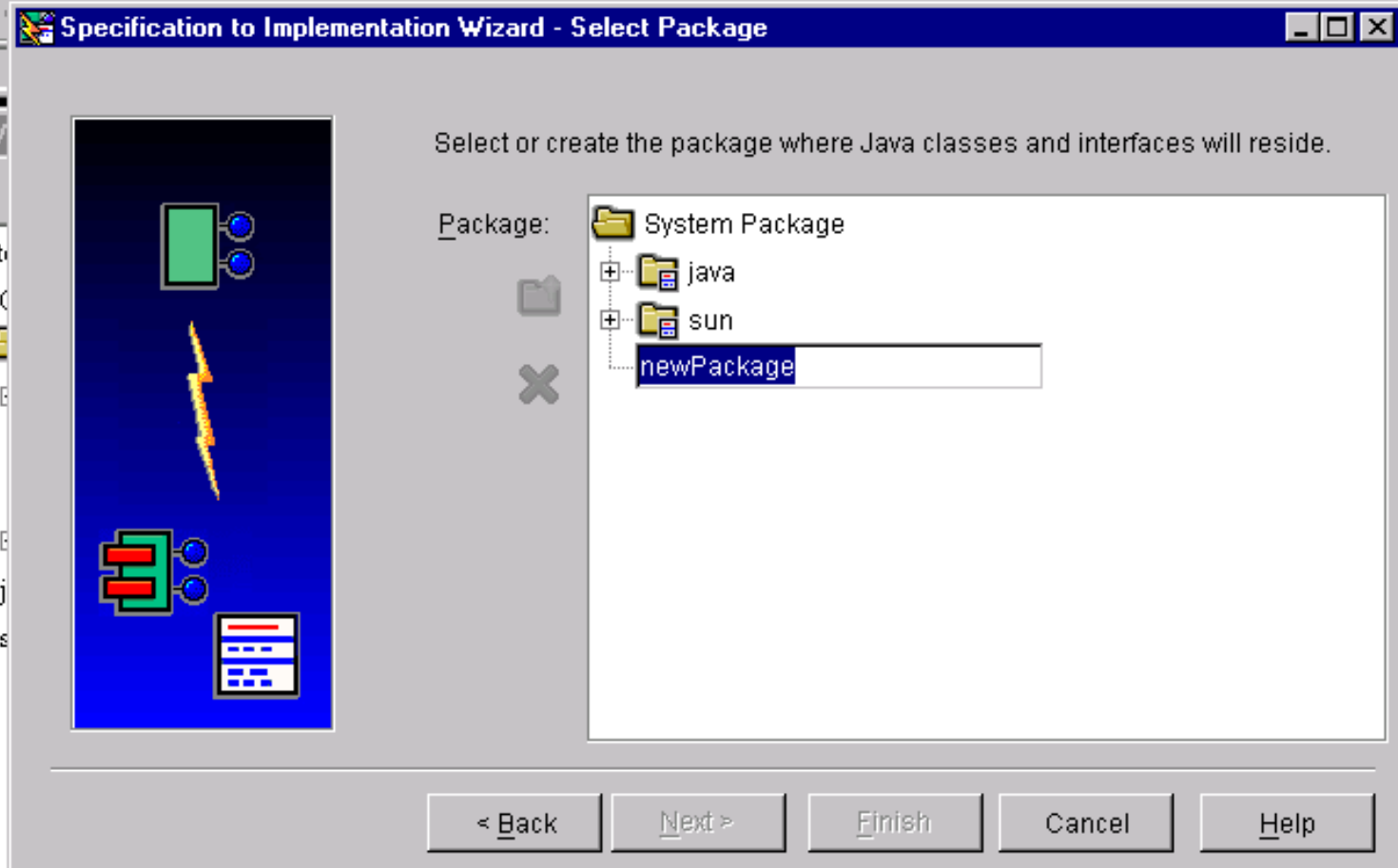
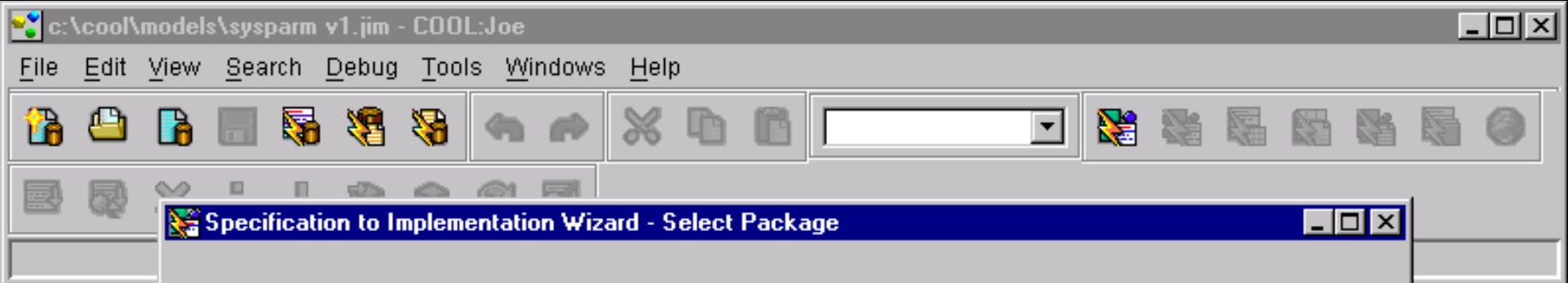


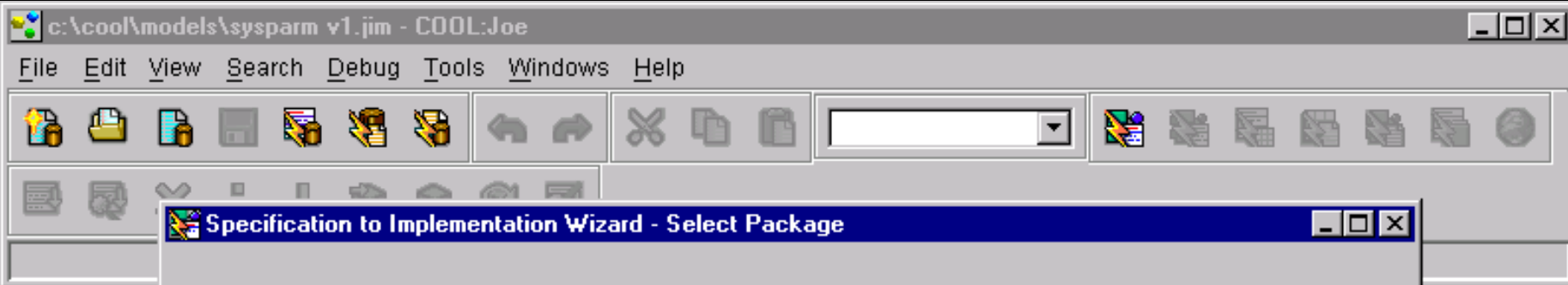
System Package

- java
- sun

New Package

< Back Next > Finish Cancel Help





Specification to Implementation Wizard - Select Package

Select or create the package where Java classes and interfaces will reside.

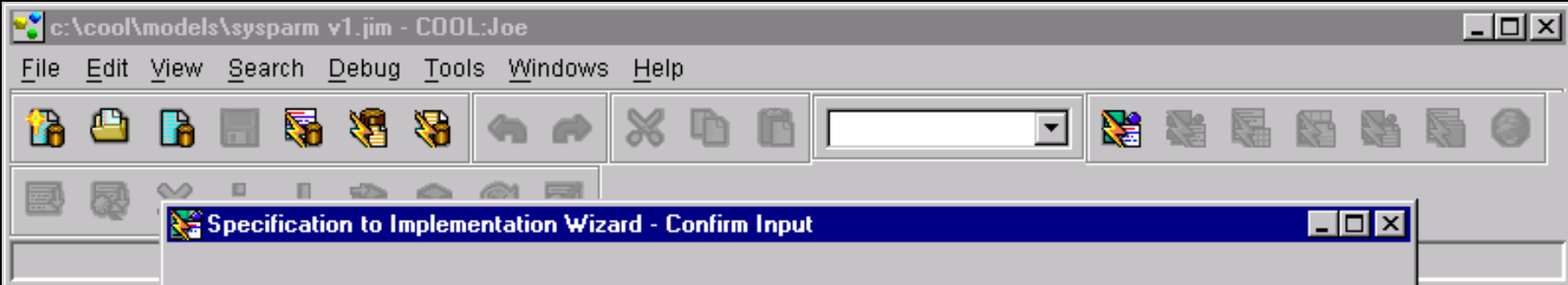


Package:

- System Package
 - java
 - sun
 - sysparm1**

< Back Next > Finish Cancel Help





Specification to Implementation Wizard - Confirm Input

Here are the options you selected. Click Back to return to previous pages to make changes.

Create a new component implementation in Package: sysparmv1

Interface: ISysParams
Java interface: sysparmv1.ISysParams
Action: Create



Project W
Project Tree



c:\cool\models\sysparm v1.jim - COOL:Joe

File Edit View Search Debug Tools Windows Help

Specification to Implementation Wizard - Status: In Progress

Starting transformation.

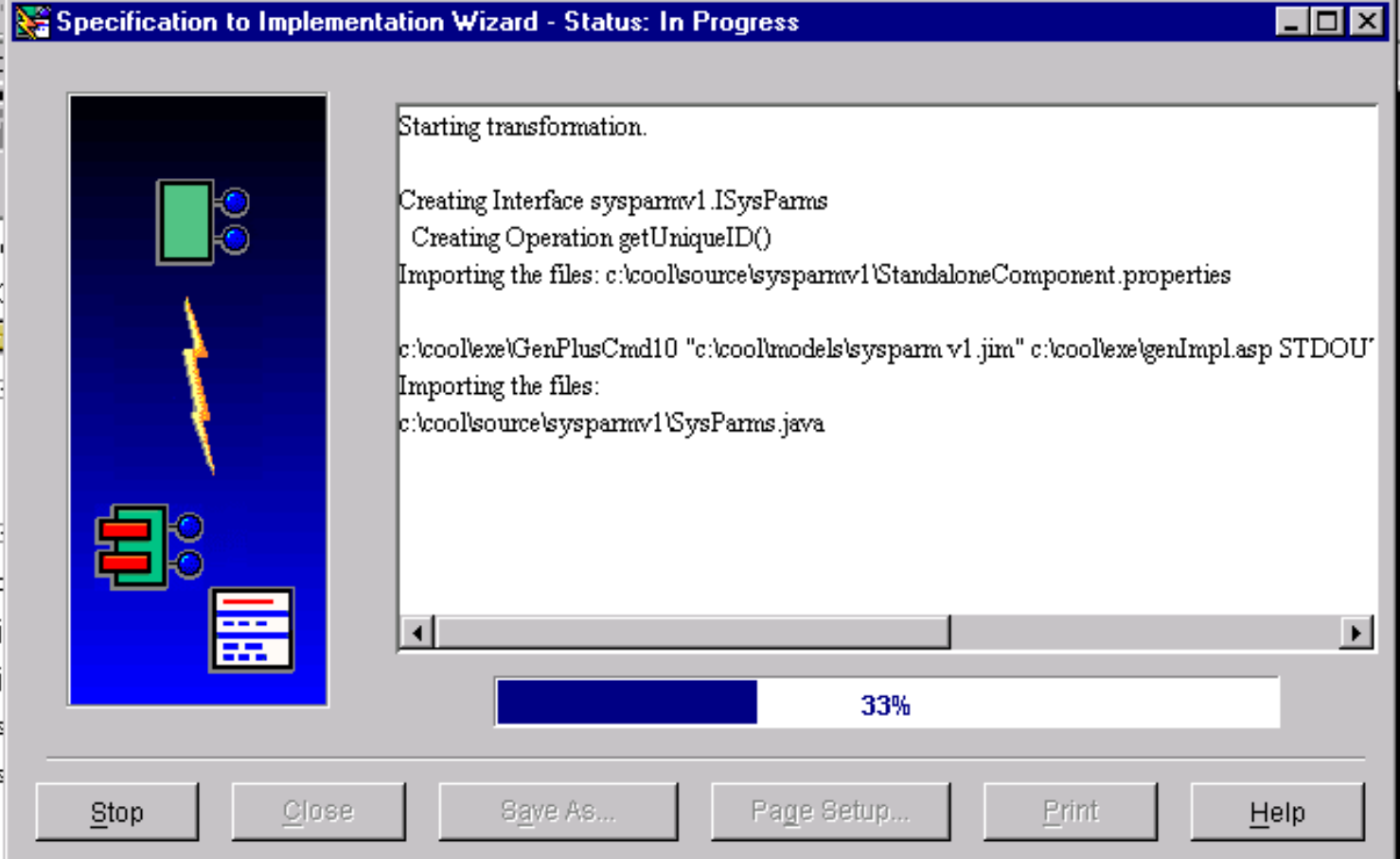
Creating Interface sysparmv1.ISysParams
Creating Operation getUniqueID()
Importing the files: c:\cool\source\sysparmv1\StandaloneComponent.properties

```
c:\cool\exe\GenPlusCmd10 "c:\cool\models\sysparm v1.jim" c:\cool\exe\genImpl.asp STDOUT
```

Importing the files:
c:\cool\source\sysparmv1\SysParams.java

33%

Stop Close Save As... Page Setup... Print Help



The image shows a software development environment window titled 'c:\cool\models\sysparm v1.jim - COOL:Joe'. A 'Specification to Implementation Wizard' dialog box is open, displaying the progress of a transformation. The wizard's status is 'In Progress'. On the left side of the wizard, there is a blue vertical panel with a green box at the top, a yellow lightning bolt in the middle, and a green box with two red rectangles at the bottom. Below this panel is a progress bar showing 33% completion. The main text area of the wizard contains the following text: 'Starting transformation.', 'Creating Interface sysparmv1.ISysParams', 'Creating Operation getUniqueID()', 'Importing the files: c:\cool\source\sysparmv1\StandaloneComponent.properties', a command line: 'c:\cool\exe\GenPlusCmd10 "c:\cool\models\sysparm v1.jim" c:\cool\exe\genImpl.asp STDOUT', and 'Importing the files: c:\cool\source\sysparmv1\SysParams.java'. At the bottom of the wizard, there are buttons for 'Stop', 'Close', 'Save As...', 'Page Setup...', 'Print', and 'Help'. In the background, a 'Project Tree' is visible on the left, showing a folder structure with 'System' and several sub-folders.



Specification to Implementation Wizard - Status: Finished

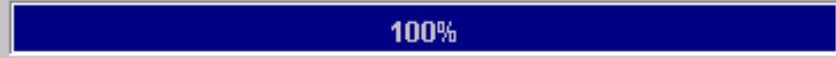


Starting transformation.

Creating Interface sysparmv1.ISysParams
Creating Operation getUniqueID()
Importing the files: c:\cool\source\sysparmv1\StandaloneComponent.properties

c:\cool\exe\GenPlusCmd10 "c:\cool\models\sysparm v1.jim" c:\cool\exe\genImpl.asp STDC
Importing the files:
c:\cool\source\sysparmv1\SysParams.java
c:\cool\source\sysparmv1\ISysParams.java
Created Component Implementation sysparmv1.SysParams

Implementation transformation completed.



- Stop
- Close
- Save As...
- Page Setup...
- Print
- Help